

Cambridge Case Study

HVAC Warehouse

Baltimore, MD



BUILDING DETAILS

Size: 18,000 sq.ft. x 28 ft. High
Construction: R-16.5 Roof
R-6.25 Walls

OPERATING CONDITIONS

Operating Hours: 11 hrs/day 5 days/wk
Design Temperature: 60° @ 11°
Thermostat Setting: 62° occupied / 50° setback
Average Temperature: 62°
Heating System: Cambridge Space Heaters
1 @ 400 MBH
Indoor vertical mounting

ACTUAL FUEL USE

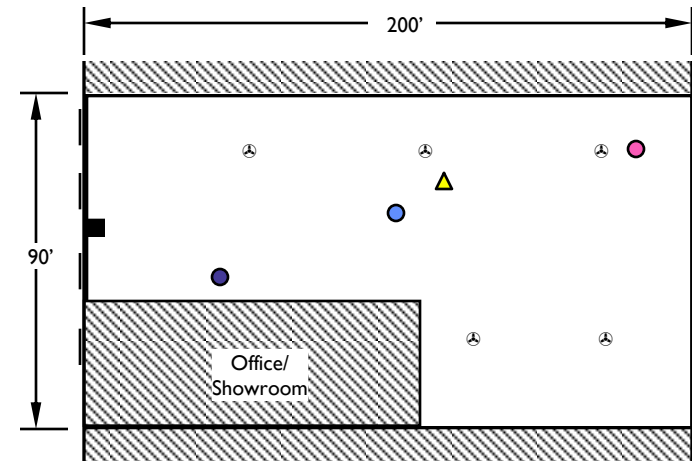
for the 2000-01 heating season (3,422 Heating Degree Days @ 62°)

3.4 Btu / HDD / sq. ft.

CALCULATED OPERATING COST

for normal heating season (4,772 Heating Degree Days @ 65°)

\$0.08 / sq.ft. (Gas only @ \$0.50/therm)

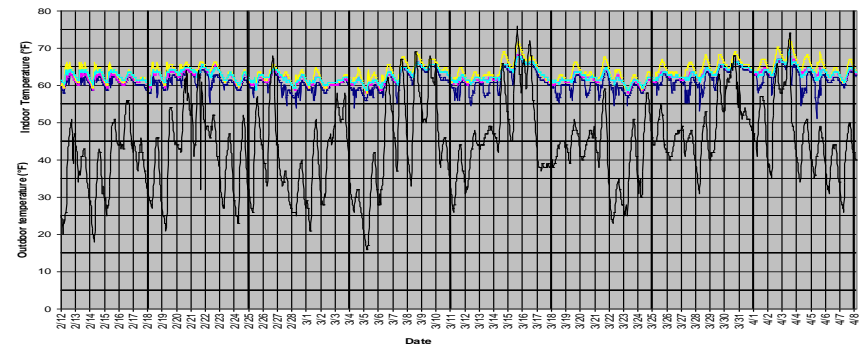


- Temperature Logger @ 5' AFF
- ▲ Temperature Logger @ 20' AFF
- Heater
- ⊗ Ceiling Fan

DATALOGGER GRAPH

Logging period: 2/12/02 - 4/8/02

Logging interval: 30 minutes



760 Long Road Crossing Dr. • Chesterfield MO 63005
800-899-1989 • www.cambridge-eng.com