

Cambridge Case Study

Distribution Center

Zanesville, OH (Central Ohio)



BUILDING DETAILS

Size: 514,480 sq.ft. x 34 ft. High

Construction: R-15 Roof
R-11 Walls

OPERATING CONDITIONS

Operating Hours: 24 hrs/day 5 days/wk
16 hrs/day weekends

Design Temperature: 65° @ 0°

Average Temperature: 65°

Heating System: Cambridge Space Heaters
14 @ 1200 MBH
12 - Under roof mounting
2 - Roof top mounting

ACTUAL FUEL USE

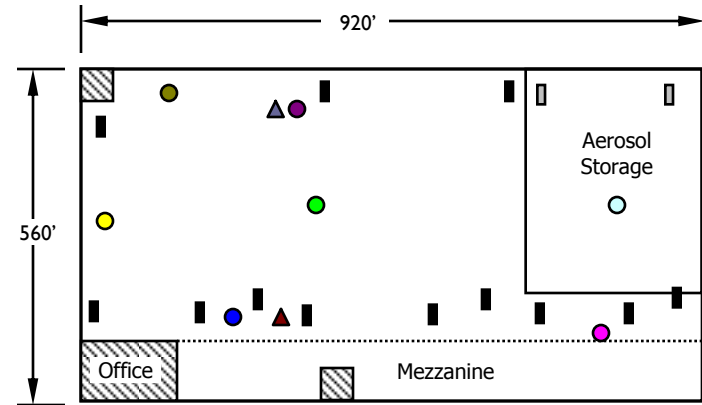
for the 1996-97 heating season (5,836 Heating Degree Days @ 66°)

0.9 Btu / HDD / sq. ft.

CALCULATED OPERATING COSTS

for 30 year (1971-2000) average heating seasons

| Indoor Temp | HDDs | @ \$0.50 / therm | @ \$0.75 / therm | @ \$1.00 / therm |
|-------------|-------|--------------------------|--------------------------|--------------------------|
| 50° | 2,481 | \$0.01 / ft ² | \$0.02 / ft ² | \$0.02 / ft ² |
| 55° | 3,369 | \$0.02 / ft ² | \$0.02 / ft ² | \$0.03 / ft ² |
| 60° | 4,402 | \$0.02 / ft ² | \$0.03 / ft ² | \$0.04 / ft ² |
| 65° | 5,590 | \$0.03 / ft ² | \$0.04 / ft ² | \$0.05 / ft ² |

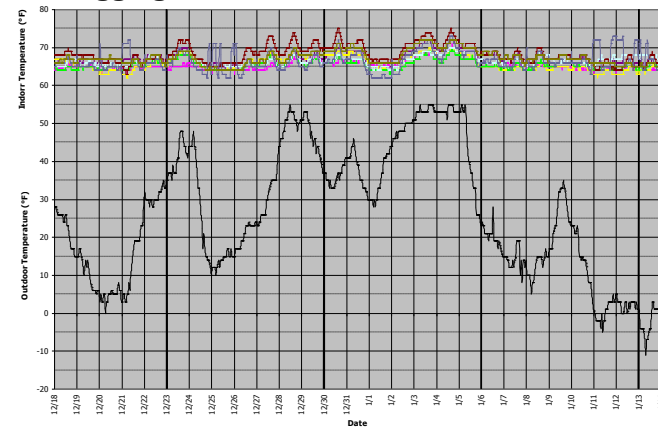


- Temperature Logger @ 5' AFF
- ▲ Temperature Logger @ 32' AFF
- Under roof heater
- Roof top heater

DATALOGGER GRAPH

Logging period: 12/18/96 - 1/14/97

Logging interval: 15 minutes



760 Long Road Crossing Dr. • Chesterfield MO 63005
800-899-1989 • www.cambridge-eng.com